

Anti-Caspase-8 Rabbit antibody



Catalog Number: 168890

General Information

Product name:

Anti-Caspase-8 Rabbit antibody

Immunogen:

Applications:

WB, ICC/IF, FC

Specificity:

Human

Antibody description:

Caspase-8 Rabbit monoclonal antibody

Properties

Preparation:

Antigen: A synthetic peptide of human Caspase-8

Formulation:

50nM Tris-Glycine(pH 7.4), 0.15M NaCl, 40%Glycerol, 0.01% sodium azide and 0.05% BSA.

Storage:

Store at 4°C short term. Store at -20°C long term. Avoid freeze / thaw cycle.

Clonality:

Monoclonal antibody

Ig Type:Rabbit IgG

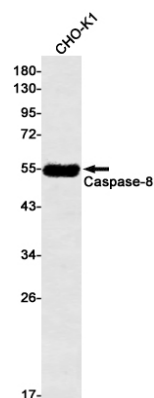
Applications

WB: 1/1000

ICC/IF: 1/20

FC: 1/20

Validations



Western blot detection of Caspase-8 in CHO-K1 cell lysates using Caspase-8 Rabbit mAb(1:500 diluted).Predicted band size:55kDa.Observed band size:55kDa.