

Anti-SLC25A12 Rabbit antibody



Catalog Number: 168871

General Information

Product name:

Anti-SLC25A12 Rabbit antibody

Immunogen:

Applications:

WB, IP

Specificity:

Human, Mouse, Rat

Antibody description:

SLC25A12 Rabbit monoclonal antibody

Properties

Preparation:

Antigen: A synthetic peptide of human SLC25A12

Formulation:

Supplied in 50nM Tris-Glycine(pH 7.4), 0.15M NaCl, 40%Glycerol, 0.01% sodium azide and 0.05% BSA.

Storage:

Store at 4°C short term. Aliquot and store at -20°C long term. Avoid freeze / thaw cycle.

Clonality:

Monoclonal antibody

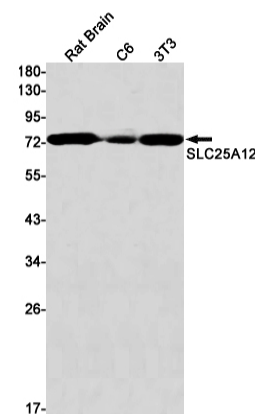
Ig Type:Rabbit IgG

Applications

1:1000

1:20

Validations



Western blot detection of SLC25A12 in Rat Brain, C6, 3T3 cell lysates using SLC25A12 Rabbit mAb(1:1000 diluted). Predicted band size: 75kDa. Observed band size: 75kDa.