

# Anti-PWP1 Rabbit antibody



Catalog Number: 168855

## Product name

Anti-PWP1 Rabbit antibody

## Specificity

Human, Mouse, Rat

## Antibody description

PWP1 Rabbit monoclonal antibody

## Preparation

Antigen: A synthetic peptide of human PWP1

## Formulation

Supplied in 50nM Tris-Glycine(pH 7.4), 0.15M NaCl, 40%Glycerol, 0.01% sodium azide and 0.05% BSA.

## Storage

Store at 4°C short term. Aliquot and store at -20°C long term. Avoid freeze / thaw cycle.

## Clonality

Monoclonal

## Ig Type

Rabbit IgG

## Applications

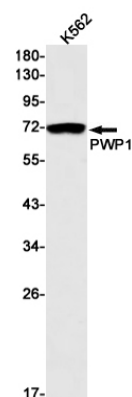
WB, FC

## Dilutions

1:1000-1:2000

1:20

## Validations



Western blot detection of PWP1 in K562 cell lysates using PWP1 Rabbit mAb(1:1000 diluted). Predicted band size:56kDa.Observed band size:75kDa.