

Anti-SSX2IP Rabbit antibody



Catalog Number: 168841

Product name

Anti-SSX2IP Rabbit antibody

Specificity

Human, Mouse, Rat

Antibody description

SSX2IP Rabbit monoclonal antibody

Preparation

Antigen: A synthetic peptide of human SSX2IP

Formulation

50nM Tris-Glycine(pH 7.4), 0.15M NaCl, 40%Glycerol, 0.01% sodium azide and 0.05% BSA.

Storage

Store at 4°C short term. Store at -20°C long term. Avoid freeze / thaw cycle.

Clonality

Monoclonal

Ig Type

Rabbit IgG

Applications

WB, IHC-P, ICC/IF

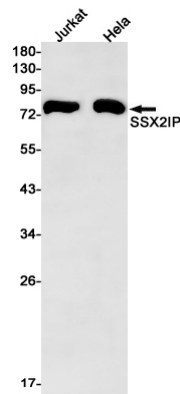
Dilutions

WB: 1/2000

IHC: 1/50

ICC/IF: 1/100

Validations



Western blot detection of SSX2IP in Jurkat, HeLa cell lysates using SSX2IP Rabbit mAb(1:1000 diluted). Predicted band size: 71 kDa. Observed band size: 71 kDa.