

Anti-CD3 epsilon Rabbit antibody



Catalog Number: 168840

Product name

Anti-CD3 epsilon Rabbit antibody

Specificity

Human

Antibody description

CD3 epsilon Rabbit monoclonal antibody

Preparation

Antigen: A synthetic peptide of human CD3 epsilon

Formulation

50nM Tris-Glycine(pH 7.4), 0.15M NaCl, 40%Glycerol, 0.01% sodium azide and 0.05% BSA.

Storage

Store at 4°C short term. Store at -20°C long term. Avoid freeze / thaw cycle.

Clonality

Monoclonal

Ig Type

Rabbit IgG

Applications

WB, IHC-P, FC, IP

Dilutions

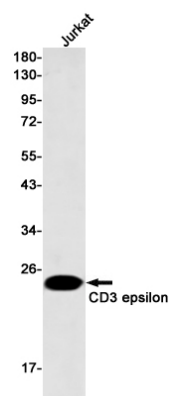
WB: 1/1000-1/5000

IHC: 1/50-1/200

FC: 1/100

IP: 1/20

Validations



Western blot detection of CD3 epsilon in Jurkat cell lysates using CD3 epsilon Rabbit mAb(1:500 diluted).Predicted band size:23kDa.Observed band size:23kDa.