

Anti-Integrin linked ILK Rabbit antibody



Catalog Number: 168823

Product name

Rabbit IgG

Anti-Integrin linked ILK Rabbit antibody

Applications

Specificity

WB, ICC/IF, FC, IP

Human, Mouse, Rat

Dilutions

Antibody description

1:1000-1:5000

Integrin linked ILK Rabbit monoclonal antibody

1:20

Preparation

1:20

Antigen: A synthetic peptide of human Integrin linked ILK

1:20

Validations

Formulation

Supplied in 50nM Tris-Glycine(pH 7.4), 0.15M NaCl, 40%Glycerol, 0.01% sodium azide and 0.05% BSA.

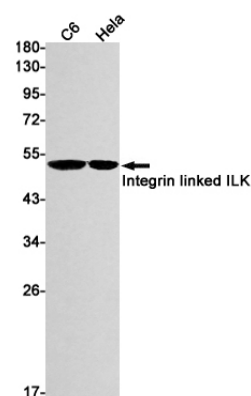
Storage

Store at 4°C short term. Aliquot and store at -20°C long term. Avoid freeze / thaw cycle.

Clonality

Monoclonal

Ig Type



Western blot detection of Integrin linked ILK in C6,HeLa cell lysates using Integrin linked ILK Rabbit mAb(1:1000 diluted).Predicted band size:51kDa.Observed band size:51kDa.