

# Anti-Phospho-CD3 zeta (Tyr142) Rabbit antibody



Catalog Number: 168822

## General Information

### Product name:

Anti-Phospho-CD3 zeta (Tyr142) Rabbit antibody

### Immunogen:

### Applications:

WB, ICC/IF, IP

### Specificity:

Human

### Antibody description:

Phospho-CD3 zeta (Tyr142) Rabbit monoclonal antibody

## Properties

### Preparation:

Antigen: A synthetic phosphopeptide corresponding to residues surrounding Tyr142 of human CD3 zeta

### Formulation:

50nM Tris-Glycine(pH 7.4), 0.15M NaCl, 40%Glycerol, 0.01% sodium azide and 0.05% BSA.

### Storage:

Store at 4°C short term. Store at -20°C long term. Avoid freeze / thaw cycle.

### Clonality:

Monoclonal

**Ig Type:**Rabbit IgG

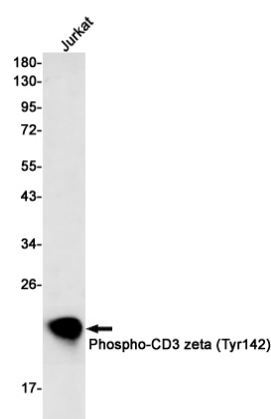
## Applications

WB: 1/1000

ICC/IF: 1/50

IP: 1/20

## Validations



Western blot detection of Phospho-CD3 zeta (Tyr142) in Jurkat cell lysates using Phospho-CD3 zeta (Tyr142) Rabbit mAb(1:500 diluted).Predicted band size:19kDa.Observed band size:19kDa.