

# Anti-Phospho-BRAF (Thr401) Rabbit antibody



Catalog Number: 168817

## Product name

Anti-Phospho-BRAF (Thr401) Rabbit antibody

## Ig Type

Rabbit IgG

## Specificity

Human, Mouse, Rat

## Applications

WB, ICC/IF, IP

## Antibody description

Phospho-BRAF (Thr401) Rabbit monoclonal antibody

## Dilutions

1:1000

1:50

## Preparation

Antigen: A synthetic phosphopeptide corresponding to residues surrounding Thr401 of human B Raf

1:20

## Validations

## Formulation

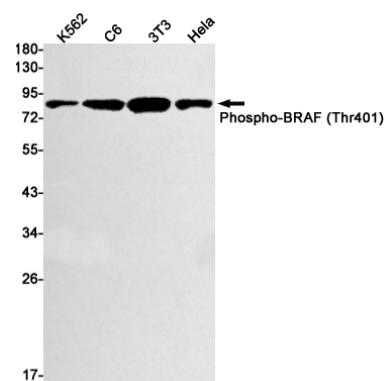
Supplied in 50nM Tris-Glycine(pH 7.4), 0.15M NaCl, 40%Glycerol, 0.01% sodium azide and 0.05% BSA.

## Storage

Store at 4°C short term. Aliquot and store at -20°C long term. Avoid freeze / thaw cycle.

## Clonality

Monoclonal



Western blot detection of Phospho-BRAF (Thr401) in K562,C6,3T3,HeLa cell lysates using Phospho-BRAF (Thr401) Rabbit mAb(1:1000 diluted).Predicted band size:84kDa.Observed band size:84kDa.