

Anti-EWSR1 Rabbit antibody



Catalog Number: 168804

Product name

Anti-EWSR1 Rabbit antibody

Specificity

Human, Mouse, Rat

Antibody description

EWSR1 Rabbit monoclonal antibody

Preparation

Antigen: A synthetic peptide of human EWSR1

Formulation

Supplied in 50nM Tris-Glycine(pH 7.4), 0.15M NaCl, 40%Glycerol, 0.01% sodium azide and 0.05% BSA.

Storage

Store at 4°C short term. Aliquot and store at -20°C long term. Avoid freeze / thaw cycle.

Clonality

Monoclonal

Ig Type

Rabbit IgG

Applications

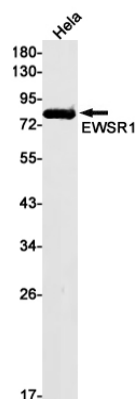
WB, ICC/IF

Dilutions

WB: 1/1000-1/5000

ICC/IF: 1/50-1/200

Validations



Western blot detection of EWSR1 in HeLa cell lysates using EWSR1 Rabbit mAb(1:1000 diluted).Predicted band size:69kDa.Observed band size:85kDa.