

# Anti-TOMM20 Rabbit antibody



Catalog Number: 168784

## Product name

Anti-TOMM20 Rabbit antibody

## Specificity

Human, Mouse, Rat

## Antibody description

TOMM20 Rabbit monoclonal antibody

## Preparation

Antigen: Recombinant protein of human TOMM20

## Formulation

50nM Tris-Glycine(pH 7.4), 0.15M NaCl, 40%Glycerol, 0.01% sodium azide and 0.05% BSA.

## Storage

Store at 4°C short term. Store at -20°C long term. Avoid freeze / thaw cycle.

## Clonality

Monoclonal

## Ig Type

Rabbit IgG

## Applications

WB, IHC-P, ICC/IF, FC

## Dilutions

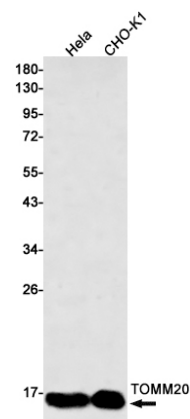
WB: 1/2000

IHC: 1/20

ICC/IF: 1/50

FC: 1/20

## Validations



Western blot detection of TOMM20 in HeLa, CHO-K1 cell lysates using TOMM20 Rabbit mAb(1:500 diluted). Predicted band size:16kDa. Observed band size:16kDa.