

Anti-PRAME Rabbit antibody



Catalog Number: 168772

Product name

Anti-PRAME Rabbit antibody

Specificity

Human

Antibody description

PRAME Rabbit monoclonal antibody

Preparation

Antigen: Recombinant protein of human PRAME

Formulation

Supplied in 50nM Tris-Glycine(pH 7.4), 0.15M NaCl, 40%Glycerol, 0.01% sodium azide and 0.05% BSA.

Storage

Store at 4°C short term. Aliquot and store at -20°C long term. Avoid freeze / thaw cycle.

Clonality

Monoclonal

Ig Type

Rabbit IgG

Applications

WB, IHC-P, ICC/IF, FC, IP

Dilutions

1:1000

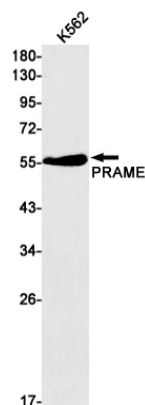
1:500

1:50

1:50

1:20

Validations



Western blot detection of PRAME in K562 cell lysates using PRAME Rabbit mAb(1:1000 diluted).Predicted band size:58kDa.Observed band size:58kDa.