

Anti-TMEM43 Rabbit antibody



Catalog Number: 168757

Product name

Anti-TMEM43 Rabbit antibody

Specificity

Human, Mouse, Rat

Antibody description

TMEM43 Rabbit monoclonal antibody

Preparation

Antigen: A synthetic peptide of human TMEM43

Formulation

Supplied in 50nM Tris-Glycine(pH 7.4), 0.15M NaCl, 40%Glycerol, 0.01% sodium azide and 0.05% BSA.

Storage

Store at 4°C short term. Aliquot and store at -20°C long term. Avoid freeze / thaw cycle.

Clonality

Monoclonal

Ig Type

Rabbit IgG

Applications

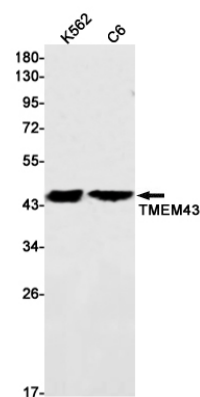
WB, IHC-P

Dilutions

1:1000-1:5000

1:50

Validations



Western blot detection of TMEM43 in K562,C6 cell lysates using TMEM43 Rabbit mAb(1:1000 diluted).Predicted band size:45kDa.Observed band size:45kDa.