

# Anti-PAH Rabbit antibody



Catalog Number: 168739

## Product name

Rabbit IgG

Anti-PAH Rabbit antibody

## Applications

## Specificity

WB, IHC-P, FC

Human, Mouse, Rat

## Dilutions

## Antibody description

1:1000-1:5000

PAH Rabbit monoclonal antibody

1:50-1:200

## Preparation

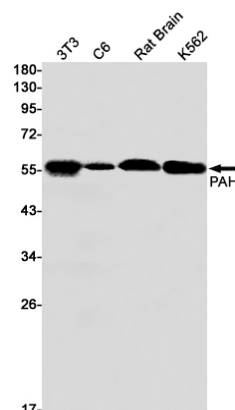
1:50

Antigen: A synthetic peptide of human PAH

## Validations

## Formulation

Supplied in 50nM Tris-Glycine(pH 7.4), 0.15M NaCl, 40%Glycerol, 0.01% sodium azide and 0.05% BSA.



## Storage

Store at 4°C short term. Aliquot and store at -20°C long term. Avoid freeze / thaw cycle.

Western blot detection of PAH in 3T3,C6,Rat Brain,K562 cell lysates using PAH Rabbit mAb(1:1000 diluted).Predicted band size:52kDa.Observed band size:52kDa.

## Clonality

Monoclonal

## Ig Type