

# Anti-Presenilin 1/PS-1 Rabbit antibody



Catalog Number: 168729

## Product name

Anti-Presenilin 1/PS-1 Rabbit antibody

## Specificity

Human, Mouse, Rat

## Antibody description

Presenilin 1/PS-1 Rabbit monoclonal antibody

## Preparation

Antigen: A synthetic peptide of human Presenilin 1

## Formulation

50nM Tris-Glycine(pH 7.4), 0.15M NaCl, 40%Glycerol, 0.01% sodium azide and 0.05% BSA.

## Storage

Store at 4°C short term. Store at -20°C long term. Avoid freeze / thaw cycle.

## Clonality

Monoclonal

## Ig Type

Rabbit IgG

## Applications

WB, IHC-P, ICC/IF, FC, IP

## Dilutions

WB: 1/1000-1/5000

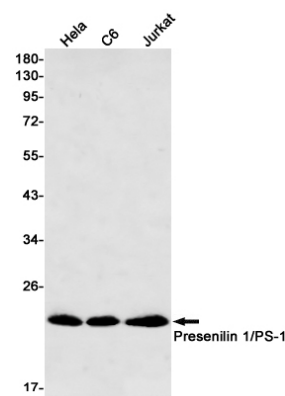
IHC: 1/20

ICC/IF: 1/20-1/50

FC: 1/20

IP: 1/20

## Validations



Western blot detection of Presenilin 1/PS-1 in HeLa,C6,Jurkat cell lysates using Presenilin 1/PS-1 Rabbit mAb(1:500 diluted).Predicted band size:53kDa.Observed band size:20kDa.