

Anti-RENT1/hUPF1 Rabbit antibody



Catalog Number: 168728

Product name

Anti-RENT1/hUPF1 Rabbit antibody

Specificity

Human, Mouse

Antibody description

RENT1/hUPF1 Rabbit monoclonal antibody

Preparation

Antigen: A synthetic peptide of human RENT1

Formulation

50nM Tris-Glycine(pH 7.4), 0.15M NaCl, 40%Glycerol, 0.01% sodium azide and 0.05% BSA.

Storage

Store at 4°C short term. Store at -20°C long term. Avoid freeze / thaw cycle.

Clonality

Monoclonal

Ig Type

Rabbit IgG

Applications

WB, IHC-P, ICC/IF, FC, IP

Dilutions

WB: 1/2000-1/10000

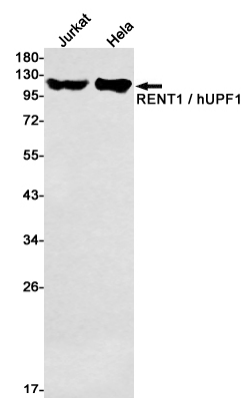
IHC: 1/50

ICC/IF: 1/100

FC: 1/20

IP: 1/20

Validations



Western blot detection of RENT1 / hUPF1 in Jurkat, HeLa cell lysates using RENT1 / hUPF1 Rabbit mAb(1:1000 diluted). Predicted band size:124kDa. Observed band size:124kDa.