

Anti-Phospho-LAT (Tyr200) Rabbit antibody



Catalog Number: 168704

Product name

Anti-Phospho-LAT (Tyr200) Rabbit antibody

Specificity

Human

Antibody description

Phospho-LAT (Tyr200) Rabbit monoclonal antibody

Preparation

Antigen: A synthetic phosphopeptide corresponding to residues surrounding Tyr200 of human LAT

Formulation

50nM Tris-Glycine(pH 7.4), 0.15M NaCl, 40%Glycerol, 0.01% sodium azide and 0.05% BSA.

Storage

Store at 4°C short term. Store at -20°C long term. Avoid freeze / thaw cycle.

Clonality

Monoclonal

Ig Type

Rabbit IgG

Applications

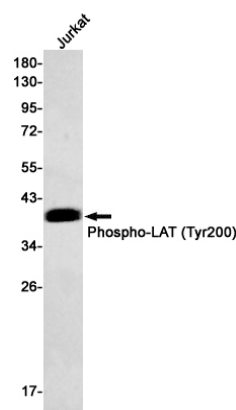
WB, ICC/IF

Dilutions

WB: 1/2000

ICC/IF: 1/50

Validations



Western blot detection of Phospho-LAT (Tyr200) in Jurkat cell lysates using Phospho-LAT (Tyr200) Rabbit mAb(1:500 diluted). Predicted band size:28kDa.Observed band size:36-38kDa.