

# Anti-Superoxide Dismutase 1 Rabbit antibody



Catalog Number: 168677

## Product name

Anti-Superoxide Dismutase 1 Rabbit antibody

## Ig Type

Rabbit IgG

## Specificity

Human

## Applications

WB

## Antibody description

Superoxide Dismutase 1 Rabbit monoclonal antibody

## Dilutions

1:5000-1:20000

## Preparation

Antigen: A synthetic peptide of human Superoxide Dismutase 1

## Validations

## Formulation

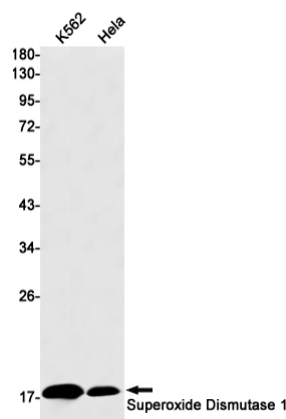
Supplied in 50nM Tris-Glycine(pH 7.4), 0.15M NaCl, 40%Glycerol, 0.01% sodium azide and 0.05% BSA.

## Storage

Store at 4°C short term. Aliquot and store at -20°C long term. Avoid freeze / thaw cycle.

## Clonality

Monoclonal



Western blot detection of Superoxide Dismutase 1 in K562, HeLa cell lysates using Superoxide Dismutase 1 Rabbit mAb(1:1000 diluted). Predicted band size: 16kDa. Observed band size: 16kDa.