

Anti-GPCR RDC1/CXCR7 Rabbit antibody



Catalog Number: 168669

Product name

Anti-GPCR RDC1/CXCR7 Rabbit antibody

Ig Type

Rabbit IgG

Specificity

Human, Mouse, Rat

Applications

WB, FC

Antibody description

GPCR RDC1/CXCR7 Rabbit monoclonal antibody

Dilutions

1:1000-1:5000

Preparation

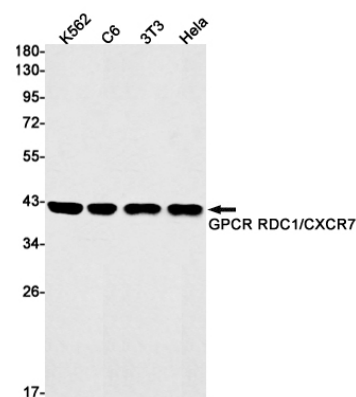
Antigen: A synthetic peptide of human GPCR RDC1

1:20

Validations

Formulation

Supplied in 50nM Tris-Glycine(pH 7.4), 0.15M NaCl, 40%Glycerol, 0.01% sodium azide and 0.05% BSA.



Storage

Store at 4°C short term. Aliquot and store at -20°C long term. Avoid freeze / thaw cycle.

Western blot detection of GPCR RDC1/CXCR7 in K562,C6,3T3,HeLa cell lysates using GPCR RDC1/CXCR7 Rabbit mAb(1:1000 diluted).Predicted band size:42kDa.Observed band size:42kDa.

Clonality

Monoclonal