

# Anti-C3orf38 Rabbit antibody



Catalog Number: 168668

## Product name

Anti-C3orf38 Rabbit antibody

## Specificity

Human

## Antibody description

C3orf38 Rabbit monoclonal antibody

## Preparation

Antigen: Recombinant protein of human C3orf38

## Formulation

Supplied in 50nM Tris-Glycine(pH 7.4), 0.15M NaCl, 40%Glycerol, 0.01% sodium azide and 0.05% BSA.

## Storage

Store at 4°C short term. Aliquot and store at -20°C long term. Avoid freeze / thaw cycle.

## Clonality

Monoclonal

## Ig Type

Rabbit IgG

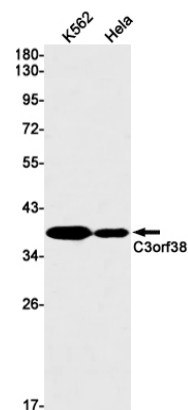
## Applications

WB

## Dilutions

1:1000-1:5000

## Validations



Western blot detection of C3orf38 in K562, HeLa cell lysates using C3orf38 Rabbit mAb(1:1000 diluted). Predicted band size: 38kDa. Observed band size: 38kDa.