

Anti-PKC mu/PKD Rabbit antibody



Catalog Number: 168664

Product name

Anti-PKC mu/PKD Rabbit antibody

Specificity

Human, Mouse, Rat

Antibody description

PKC mu/PKD Rabbit monoclonal antibody

Preparation

Antigen: A synthetic peptide of human PKC mu

Formulation

Supplied in 50nM Tris-Glycine(pH 7.4), 0.15M NaCl, 40%Glycerol, 0.01% sodium azide and 0.05% BSA.

Storage

Store at 4°C short term. Aliquot and store at -20°C long term. Avoid freeze / thaw cycle.

Clonality

Monoclonal

Ig Type

Rabbit IgG

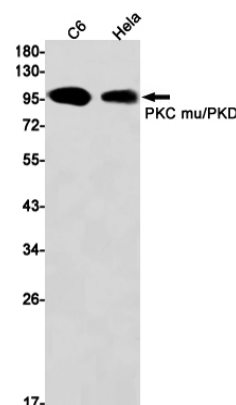
Applications

WB

Dilutions

1:1000-1:5000

Validations



Western blot detection of PKC mu/PKD in C6, HeLa cell lysates using PKC mu/PKD Rabbit mAb(1:1000 diluted). Predicted band size: 102kDa. Observed band size: 102kDa.