

# Anti-Presenilin 2 Rabbit antibody



Catalog Number: 168649

## Product name

Anti-Presenilin 2 Rabbit antibody

## Specificity

Human, Mouse, Rat

## Antibody description

Presenilin 2 Rabbit monoclonal antibody

## Preparation

Antigen: A synthetic peptide of human Presenilin 2

## Formulation

Supplied in 50nM Tris-Glycine(pH 7.4), 0.15M NaCl, 40%Glycerol, 0.01% sodium azide and 0.05% BSA.

## Storage

Store at 4°C short term. Aliquot and store at -20°C long term. Avoid freeze / thaw cycle.

## Clonality

Monoclonal

## Ig Type

Rabbit IgG

## Applications

WB, ICC/IF, IP

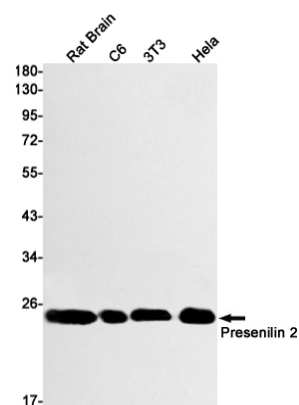
## Dilutions

WB: 1/2000

ICC/IF: 1/20-1/50

IP: 1/20

## Validations



Western blot detection of Presenilin 2 in Rat Brain, C6, 3T3, HeLa cell lysates using Presenilin 2 Rabbit mAb(1:1000 diluted). Predicted band size: 50kDa. Observed band size: 23kDa.