

Anti-RPL10A Rabbit antibody



Catalog Number: 168636

Product name

Anti-RPL10A Rabbit antibody

Specificity

Human, Mouse, Rat

Antibody description

RPL10A Rabbit monoclonal antibody

Preparation

Antigen: Recombinant protein of human RPL10A

Formulation

Supplied in 50nM Tris-Glycine(pH 7.4), 0.15M NaCl, 40%Glycerol, 0.01% sodium azide and 0.05% BSA.

Storage

Store at 4°C short term. Aliquot and store at -20°C long term. Avoid freeze / thaw cycle.

Clonality

Monoclonal

Ig Type

Rabbit IgG

Applications

WB, ICC/IF, FC

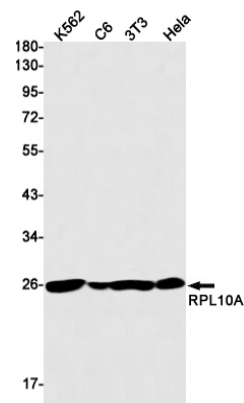
Dilutions

WB: 1/1000-1/5000

ICC/IF: 1/20-1/50

FC: 1/20

Validations



Western blot detection of RPL10A in K562,C6,3T3,Hela cell lysates using RPL10A Rabbit mAb(1:1000 diluted).Predicted band size:25kDa.Observed band size:25kDa.