

# Anti-TRIM25/EFP Rabbit antibody



Catalog Number: 168630

## Product name

Anti-TRIM25/EFP Rabbit antibody

## Specificity

Human, Mouse, Rat

## Antibody description

TRIM25/EFP Rabbit monoclonal antibody

## Preparation

Antigen: A synthetic peptide of human TRIM25

## Formulation

Supplied in 50nM Tris-Glycine(pH 7.4), 0.15M NaCl, 40%Glycerol, 0.01% sodium azide and 0.05% BSA.

## Storage

Store at 4°C short term. Aliquot and store at -20°C long term. Avoid freeze / thaw cycle.

## Clonality

Monoclonal

## Ig Type

Rabbit IgG

## Applications

WB, ICC/IF, FC, IP

## Dilutions

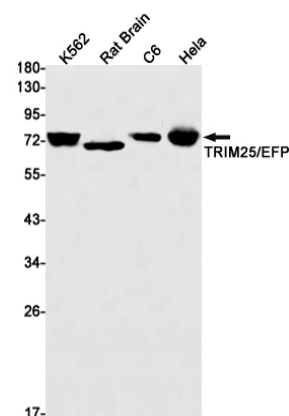
WB: 1/1000-1/5000

ICC/IF: 1/50-1/200

FC: 1/20

IP: 1/20

## Validations



Western blot detection of TRIM25/EFP in K562, Rat Brain, C6, HeLa cell lysates using TRIM25/EFP Rabbit mAb(1:1000 diluted). Predicted band size: 71 kDa. Observed band size: 71 kDa.