

# Anti-SESN2 Rabbit antibody



Catalog Number: 168628

## Product name

Anti-SESN2 Rabbit antibody

## Specificity

Human, Mouse, Rat

## Antibody description

SESN2 Rabbit monoclonal antibody

## Preparation

Antigen: Recombinant protein of human SESN2

## Formulation

Supplied in 50nM Tris-Glycine(pH 7.4), 0.15M NaCl, 40%Glycerol, 0.01% sodium azide and 0.05% BSA.

## Storage

Store at 4°C short term. Aliquot and store at -20°C long term. Avoid freeze / thaw cycle.

## Clonality

Monoclonal

## Ig Type

Rabbit IgG

## Applications

WB, ICC/IF, FC, IP

## Dilutions

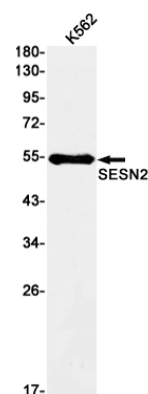
WB: 1/1000

ICC/IF: 1/20

FC: 1/20

IP: 1/20

## Validations



Western blot detection of SESN2 in K562 cell lysates using SESN2 Rabbit mAb(1:1000 diluted). Predicted band size:55kDa. Observed band size:55kDa.