

Anti-p38 Rabbit antibody



Catalog Number: 168624

Product name

Anti-p38 Rabbit antibody

Specificity

Human, Mouse, Rat

Antibody description

p38 Rabbit monoclonal antibody

Preparation

Antigen: A synthetic peptide of human p38

Formulation

50nM Tris-Glycine(pH 7.4), 0.15M NaCl, 40%Glycerol, 0.01% sodium azide and 0.05% BSA.

Storage

Store at 4°C short term. Store at -20°C long term. Avoid freeze / thaw cycle.

Clonality

Monoclonal

Ig Type

Rabbit IgG

Applications

WB, IHC-P, ICC/IF

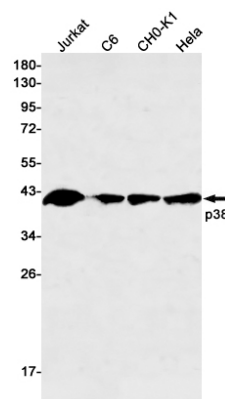
Dilutions

WB: 1/1000-1/2000

IHC: 1/20-1/100

ICC/IF: 1/20-1/100

Validations



Western blot detection of p38 in Jurkat,C6,CHO-K1,HeLa cell lysates using p38 Rabbit mAb(1:500 diluted).Predicted band size:41kDa.Observed band size:41kDa.