

# Anti-Activin A Receptor Type IB Rabbit antibody



Catalog Number: 168601

## Product name

Rabbit IgG

Anti-Activin A Receptor Type IB Rabbit antibody

## Applications

## Specificity

WB, IHC-P, ICC/IF

Human, Mouse, Rat

## Dilutions

## Antibody description

WB: 1/1000-1/5000

Activin A Receptor Type IB Rabbit monoclonal antibody

IHC: 1/50-1/200

## Preparation

ICC/IF: 1/20-1/50

Antigen: A synthetic peptide of human Activin A Receptor Type IB

## Validations

## Formulation

50nM Tris-Glycine(pH 7.4), 0.15M NaCl, 40%Glycerol, 0.01% sodium azide and 0.05% BSA.

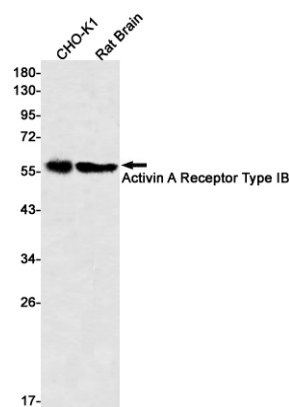
## Storage

Store at 4°C short term. Store at -20°C long term. Avoid freeze / thaw cycle.

## Clonality

Monoclonal

## Ig Type



Western blot detection of Activin A Receptor Type IB in CHO-K1,Rat Brain lysates using Activin A Receptor Type IB Rabbit mAb(1:500 diluted).Predicted band size:57kDa.Observed band size:57kDa.