

# Anti-DCAMKL1 Rabbit antibody



Catalog Number: 168600

## Product name

Rabbit IgG

Anti-DCAMKL1 Rabbit antibody

## Applications

## Specificity

WB, IHC-P, ICC/IF

Human, Mouse, Rat

## Dilutions

## Antibody description

1:1000

DCAMKL1 Rabbit monoclonal antibody

1:20

## Preparation

1:50

Antigen: A synthetic peptide of human DCAMKL1

## Validations

## Formulation

Supplied in 50nM Tris-Glycine(pH 7.4), 0.15M NaCl, 40%Glycerol, 0.01% sodium azide and 0.05% BSA.

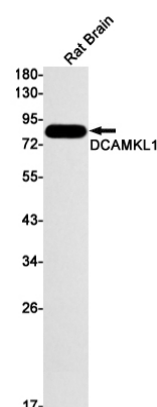
## Storage

Store at 4°C short term. Aliquot and store at -20°C long term. Avoid freeze / thaw cycle.

## Clonality

Monoclonal

## Ig Type



Western blot detection of DCAMKL1 in Rat Brain lysates using DCAMKL1 Rabbit mAb(1:1000 diluted).Predicted band size:82kDa.Observed band size:82kDa.