

Anti-PARK7/DJ1 Rabbit antibody



Catalog Number: 168594

Product name

Anti-PARK7/DJ1 Rabbit antibody

Specificity

Human, Mouse, Rat

Antibody description

PARK7/DJ1 Rabbit monoclonal antibody

Preparation

Antigen: A synthetic peptide of human PARK7/DJ1

Formulation

Supplied in 50nM Tris-Glycine(pH 7.4), 0.15M NaCl, 40%Glycerol, 0.01% sodium azide and 0.05% BSA.

Storage

Store at 4°C short term. Aliquot and store at -20°C long term. Avoid freeze / thaw cycle.

Clonality

Monoclonal

Ig Type

Rabbit IgG

Applications

WB, IHC-P, ICC/IF, FC, IP

Dilutions

1:2000-1:10000

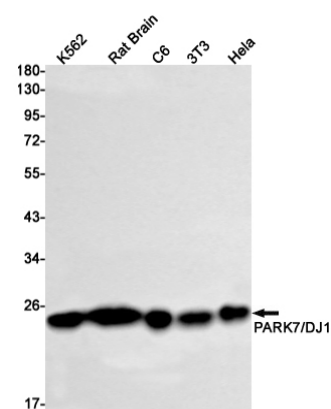
1:50-1:200

1:20-1:100

1:20

1:20

Validations



Western blot detection of PARK7/DJ1 in K562, Rat Brain, C6, 3T3, HeLa cell lysates using PARK7/DJ1 Rabbit mAb(1:1000 diluted). Predicted band size: 20kDa. Observed band size: 22kDa.