

Anti-Phospho-MDM2 (Ser166) Rabbit antibody



Catalog Number: 168592

Product name

Anti-Phospho-MDM2 (Ser166) Rabbit antibody

Dilutions

1:5000-1:20000

Specificity

1:20-1:50

Human, Rat

Antibody description

Phospho-MDM2 (Ser166) Rabbit monoclonal antibody

Preparation

Antigen: A synthetic phosphopeptide corresponding to residues surrounding Ser166 of human MDM2

Formulation

Supplied in 50nM Tris-Glycine(pH 7.4), 0.15M NaCl, 40%Glycerol, 0.01% sodium azide and 0.05% BSA.

Storage

Store at 4°C short term. Aliquot and store at -20°C long term. Avoid freeze / thaw cycle.

Clonality

Monoclonal

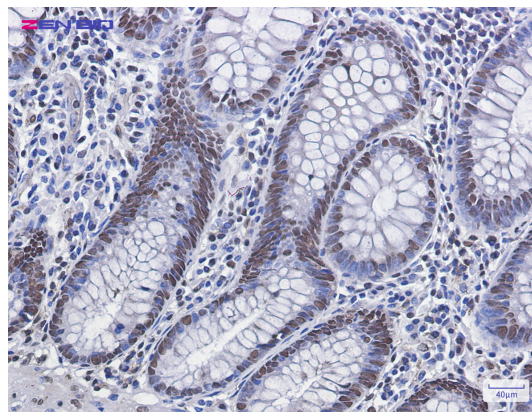
Ig Type

Rabbit IgG

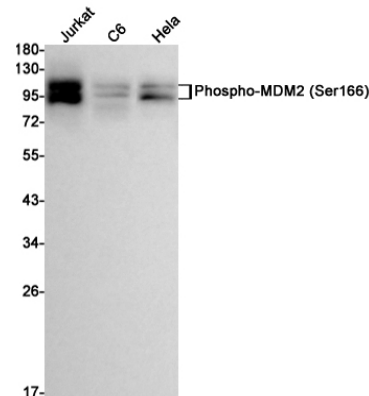
Applications

WB, IHC-P

Validations



Immunohistochemistry of Phospho-MDM2 (Ser166) in paraffin-embedded human colon cancer tissue using Phospho-MDM2 (Ser166) Rabbit mAb at dilution 1/100



Western blot detection of Phospho-MDM2 (Ser166) in Jurkat, C6, HeLa cell lysates using Phospho-MDM2 (Ser166) Rabbit mAb(1:1000 diluted). Predicted band size: 55kDa. Observed band size: 90kDa.