

Anti-MMP14 Rabbit antibody



Catalog Number: 168587

Product name

Rabbit IgG

Anti-MMP14 Rabbit antibody

Applications

Specificity

WB, IHC-P, IP

Human, Mouse, Rat

Dilutions

Antibody description

1:1000

MMP14 Rabbit monoclonal antibody

1:50

Preparation

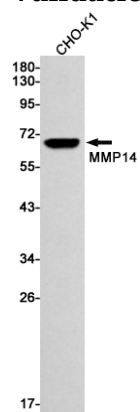
1:20

Antigen: A synthetic peptide of human MMP14

Validations

Formulation

Supplied in 50nM Tris-Glycine(pH 7.4), 0.15M NaCl, 40%Glycerol, 0.01% sodium azide and 0.05% BSA.



Storage

Store at 4°C short term. Aliquot and store at -20°C long term. Avoid freeze / thaw cycle.

Clonality

Monoclonal

Western blot detection of MMP14 in CHO-K1 cell lysates using MMP14 Rabbit mAb(1:1000 diluted).Predicted band size:66kDa.Observed band size:66kDa.

Ig Type