

Anti-MAGEE1 Rabbit antibody



Catalog Number: 168566

Product name

Anti-MAGEE1 Rabbit antibody

Specificity

Human

Antibody description

MAGEE1 Rabbit monoclonal antibody

Preparation

Antigen: Recombinant protein of human MAGEE1

Formulation

Supplied in 50nM Tris-Glycine(pH 7.4), 0.15M NaCl, 40%Glycerol, 0.01% sodium azide and 0.05% BSA.

Storage

Store at 4°C short term. Aliquot and store at -20°C long term. Avoid freeze / thaw cycle.

Clonality

Monoclonal

Ig Type

Rabbit IgG

Applications

WB, IHC-P, ICC/IF, FC, IP

Dilutions

1:1000

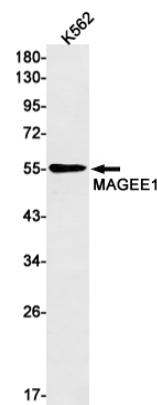
1:20-1:500

1:100

1:20

1:20

Validations



Western blot detection of MAGEE1 in K562 cell lysates using MAGEE1 Rabbit mAb(1:1000 diluted). Predicted band size:41 kDa. Observed band size:55kDa.