

Anti-CRMP3 Rabbit antibody



Catalog Number: 168564

Product name

Anti-CRMP3 Rabbit antibody

Specificity

Human, Mouse, Rat

Antibody description

CRMP3 Rabbit monoclonal antibody

Preparation

Antigen: A synthetic peptide of human CRMP3

Formulation

Supplied in 50nM Tris-Glycine(pH 7.4), 0.15M NaCl, 40%Glycerol, 0.01% sodium azide and 0.05% BSA.

Storage

Store at 4°C short term. Aliquot and store at -20°C long term. Avoid freeze / thaw cycle.

Clonality

Monoclonal

Ig Type

Rabbit IgG

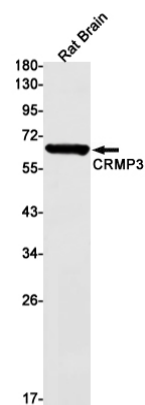
Applications

WB

Dilutions

1:2000-1:10000

Validations



Western blot detection of CRMP3 in Rat Brain lysates using CRMP3 Rabbit mAb(1:1000 diluted).Predicted band size:62kDa.Observed band size:62kDa.