

Anti-SHP2 (6G2) Mouse antibody



Catalog Number: 168489

Product name

Anti-SHP2 (6G2) Mouse antibody

Specificity

Human

Antibody description

SHP2 (6G2) Mouse monoclonal antibody

Preparation

Antigen: Purified recombinant fragment of human PTPN11 (AA: 263-329) expressed in E. Coli.

Formulation

Purified antibody in PBS with 0.05% sodium azide

Storage

Store at 4°C short term. Store at -20°C long term. Avoid freeze / thaw cycle.

Clonality

Monoclonal

Ig Type

Mouse IgG1

Applications

WB, IHC-P, ICC/IF, FC, IP

Dilutions

WB: 1/500 - 1/2000

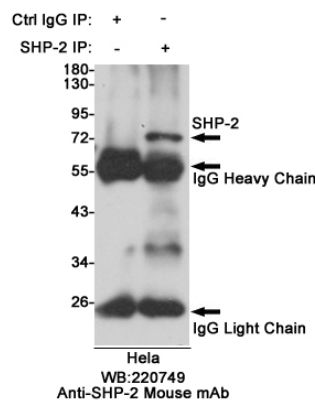
IHC: 1/200 - 1/1000

ICC: 1/200 - 1/1000

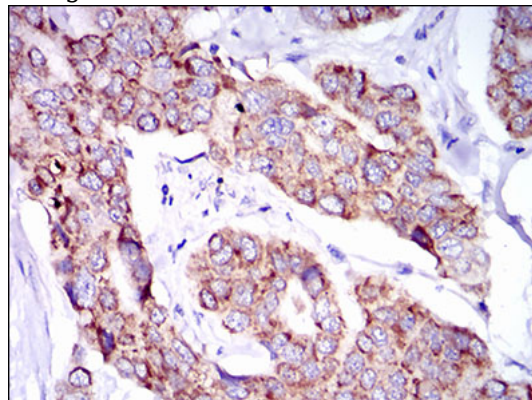
FC: 1/200 - 1/400

ELISA: 1/10000

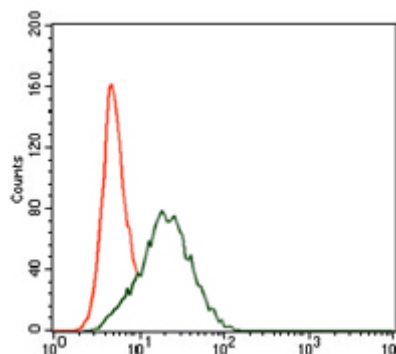
Validations



Immunoprecipitation analysis of HeLa cell lysates using SHP-2 mouse mAb.



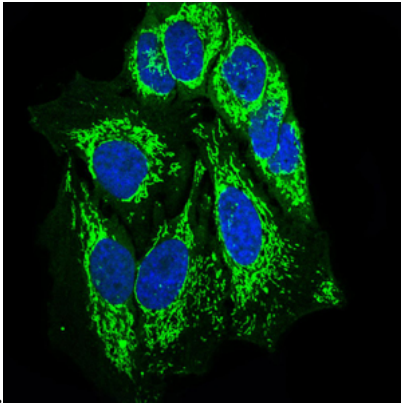
Immunohistochemical analysis of paraffin-embedded breast cancer tissues using SHP-2 mouse mAb with DAB staining.



Flow cytometric analysis of HepG2 cells using SHP-2 mouse mAb (green) and negative control

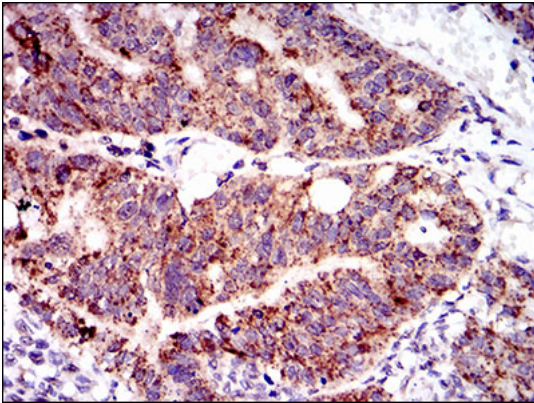
Anti-SHP2 (6G2) Mouse antibody

Catalog Number: 168489

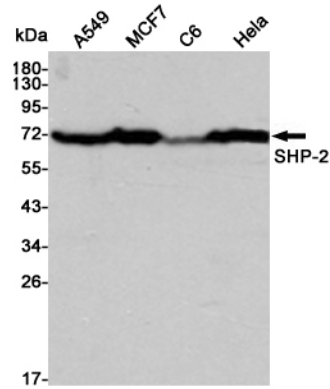


(red).

Immunofluorescence analysis of HeLa cells using SHP-2 mouse mAb (green). Blue: DRAQ5 fluorescent DNA dye.



Immunohistochemical analysis of paraffin-embedded rectum cancer tissues using SHP-2 mouse mAb with DAB staining.



Western blot detection of SHP-2 in A549, MCF7, C6 and HeLa cell lysates using SHP-2 mouse mAb (1:3000 diluted). Predicted band size: 68 kDa. Observed band size: 72 kDa.