

# Anti-MLH1 (4C1) Mouse antibody



Catalog Number: 168475

## General Information

### Product name:

Anti-MLH1 (4C1) Mouse antibody

### Immunogen:

### Applications:

WB, IHC-P, ICC/IF

### Specificity:

Human, Monkey

### Antibody description:

MLH1 (4C1) Mouse monoclonal antibody

## Properties

### Preparation:

Antigen: Purified recombinant fragment of MLH1 (aa381-483) expressed in E. Coli.

### Formulation:

Ascitic fluid containing 0.03% sodium azide.

### Storage:

Store at 4°C short term. Store at -20°C long term. Avoid freeze / thaw cycle.

### Clonality:

Monoclonal antibody

**Ig Type:** Mouse IgG1

## Applications

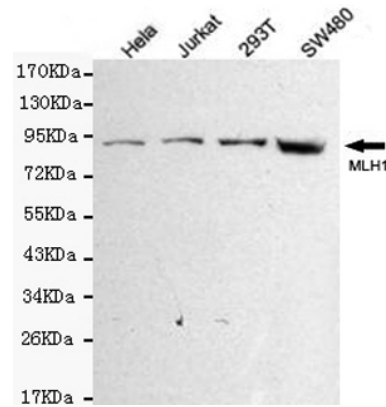
WB: 1/500 - 1/2000

IHC: 1/200 - 1/1000

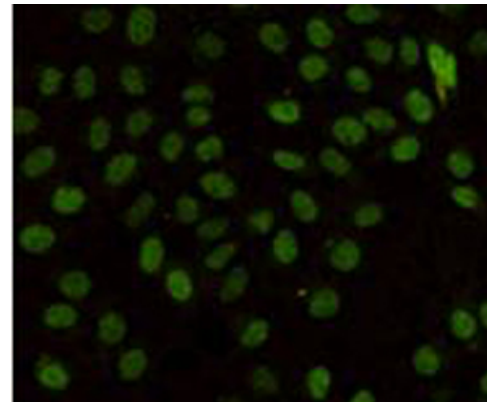
ICC: 1/200 - 1/1000

ELISA: 1/10000

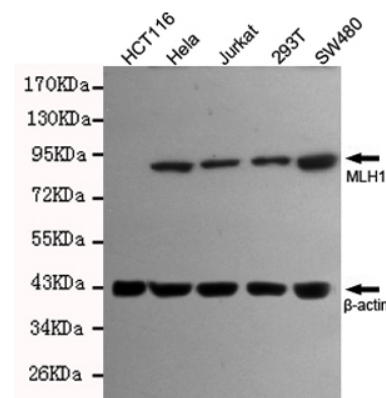
## Validations



Western blot detection of MLH1 in HeLa, Jurkat, 293T and SW480 cell lysates using MLH1 mouse mAb (1:500 diluted). Predicted band size: 85KDa. Observed band size: 85KDa.



Immunocytochemistry staining of HeLa cells fixed in 1% Paraformaldehyde and using MLH1 mouse mAb (dilution 1:100).



Western blot detection of MLH1 in

# Anti-MLH1 (4C1) Mouse antibody



Catalog Number: 168475

---

SW480,293T,Jurkat and Hela cell lysates using

MLH1 mouse mAb (1:500 diluted).Predicted band size:85KDa.Observed band size:85KDa.