

# Anti-CKM (6A12) Mouse antibody



Catalog Number: 168436

## Product name

Anti-CKM (6A12) Mouse antibody

## Specificity

Human

## Antibody description

CKM (6A12) Mouse monoclonal antibody

## Preparation

Antigen: Purified recombinant human CK-MM protein expressed in E.coli.

## Formulation

PBS(pH 7.4) containing with 0.03% Proclin300.

## Storage

Store at 4°C short term. Avoid freeze / thaw cycle.

## Clonality

Monoclonal

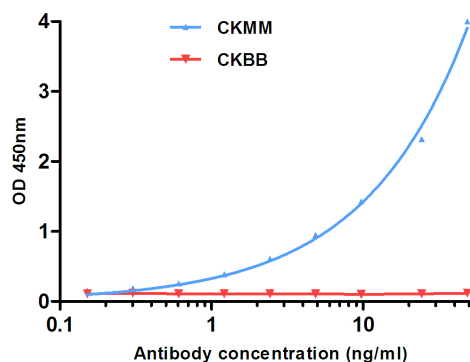
## Ig Type

Mouse IgG2b

## Applications

ELISA

## Validations



Indirect ELISA assay for anti-CK-MM mouse mAb. CKBB as control antigen. Antigen coating concentration: 4ug/ml.