

# Anti-RTR (2B11) Mouse antibody



Catalog Number: 168435

## Product name

Anti-RTR (2B11) Mouse antibody

## Specificity

Human

## Antibody description

RTR (2B11) Mouse monoclonal antibody

## Preparation

Antigen: Purified recombinant fragment of human NR6A1 (AA: 65-118) expressed in E. Coli.

## Formulation

Purified antibody in PBS with 0.05% sodium azide

## Storage

Store at 4°C short term. Store at -20°C long term. Avoid freeze / thaw cycle.

## Clonality

Monoclonal

## Ig Type

Mouse IgG1

## Applications

WB, IHC-P, ICC/IF, FC

## Dilutions

WB: 1/500 - 1/2000

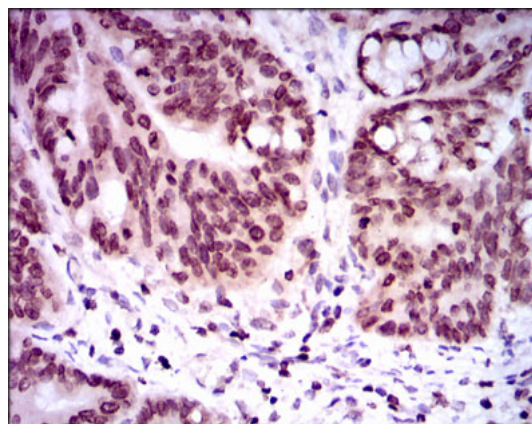
IHC: 1/200 - 1/1000

ICC: 1/400

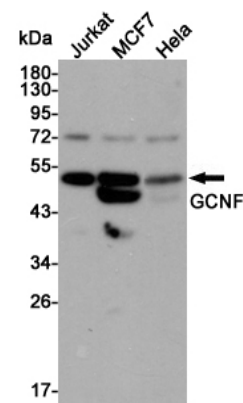
FC: 1/200 - 1/400

ELISA: 1/10000

## Validations

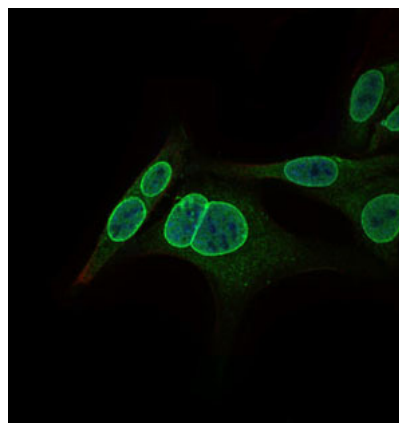


Immunohistochemical analysis of paraffin-embedded rectum cancer tissues using NR6A1



mouse mAb with DAB staining.

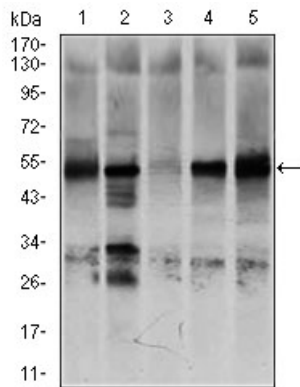
Western blot detection of GCNF in Jurkat, MCF7 and HeLa cell lysates using GCNF mouse mAb (1:3000 diluted). Predicted band size: 54 kDa. Observed band size: 54 kDa.



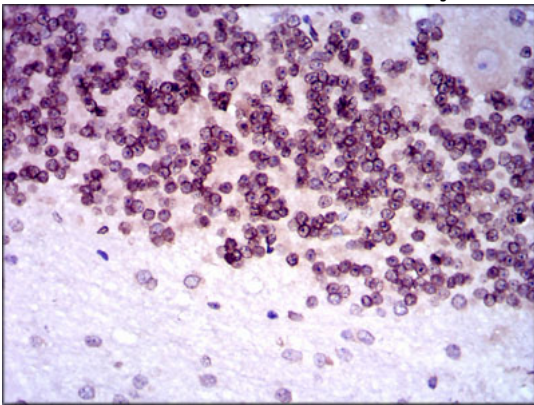
Immunofluorescence analysis of HepG2 cells using NR6A1 mouse mAb (green). Blue

# Anti-RTR (2B11) Mouse antibody

Catalog Number: 168435

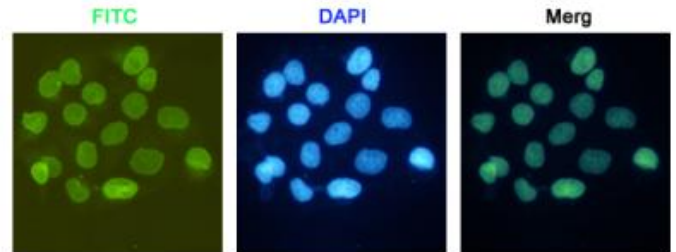


Western blot analysis using NR6A1 mouse mAb against K562 (1), NTERA-2 (2), HEK293 (3), HUVE-12 (4), and HeLa (5) cell lysate.

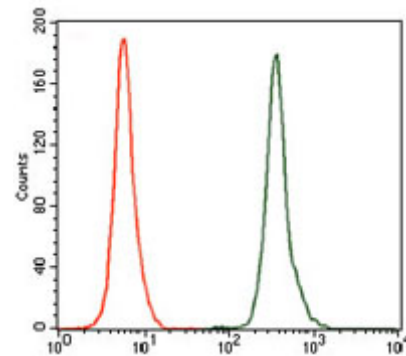


Immunohistochemical analysis of paraffin-

embedded cerebellum tissues using NR6A1 mouse mAb with DAB staining.



Immunocytochemistry staining of HeLa cells fixed with 4% Paraformaldehyde and using anti-GCNF mouse mAb (dilution 1:200).



Flow cytometric analysis of K562 cells using NR6A1 mouse mAb (green) and negative control (red).