

Anti-Bcl10 (6F7) Mouse antibody



Catalog Number: 168417

Product name

Anti-Bcl10 (6F7) Mouse antibody

Specificity

Human, Mouse

Antibody description

Bcl10 (6F7) Mouse monoclonal antibody

Preparation

Antigen: Purified recombinant fragment of human BCL-10 expressed in E. Coli.

Formulation

Ascitic fluid containing 0.03% sodium azide.

Storage

Store at 4°C short term. Store at -20°C long term. Avoid freeze / thaw cycle.

Clonality

Monoclonal

Ig Type

Mouse IgG1

Applications

WB, IHC-P, ICC/IF, FC

Dilutions

WB: 1/500 - 1/2000

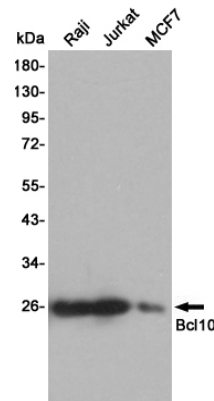
IHC: 1/200 - 1/1000

ICC: 1/200 - 1/1000

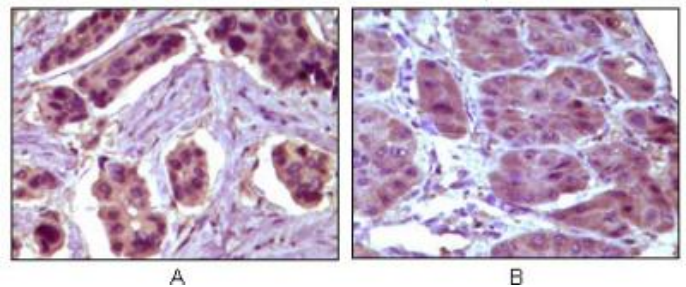
FC: 1/200 - 1/400

ELISA: 1/10000

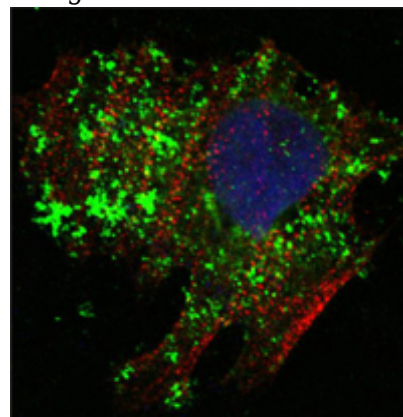
Validations



Western blot detection of Bcl10 in Raji, Jurkat and MCF7 cell lysates using Bcl10 mouse mAb (1:1000 diluted). Predicted band size: 26KDa. Observed band size: 26KDa.



Immunohistochemical analysis of paraffin-embedded human breast carcinoma (A) and liver carcinoma (B), showing cytoplasmic localization using BCL10 mouse mAb with DAB staining.



Confocal immunofluorescence analysis of HeLa cells using BCL10 mouse mAb (green). Red: Actin filaments have been labeled with Alexa Fluor-555 phalloidin. Blue: DRAQ5 fluorescent DNA dye.

Anti-Bcl10 (6F7) Mouse antibody



Catalog Number: 168417

Flow cytometric analysis of HeLa cells using BCL10 mouse mAb (green) and negative control (purple).

