

# Anti-ATP citrate Lyase (3D9) Mouse antibody



Catalog Number: 168410

## Product name

Anti-ATP citrate Lyase (3D9) Mouse antibody

## Specificity

Human, Mouse, Monkey

## Antibody description

ATP citrate Lyase (3D9) Mouse monoclonal antibody

## Preparation

Antigen: Purified recombinant human ATP-Citrate Lyase protein fragments expressed in E.coli.

## Formulation

Purified mouse monoclonal in buffer containing 0.1M Tris-Glycine (pH 7.4 150 mM NaCl) with 0.02% sodium azide 50% glycerol

## Storage

Store at 4°C short term. Store at -20°C long term. Avoid freeze / thaw cycle.

## Clonality

Monoclonal

## Ig Type

IgG2a

## Applications

WB, ICC/IF, FC

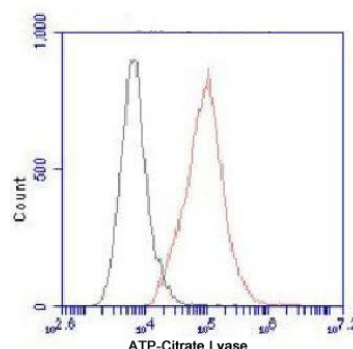
## Dilutions

WB: 1/1000

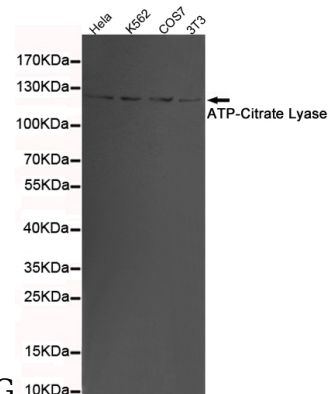
;ICC: 1/150

;FC: 1/100

## Validations

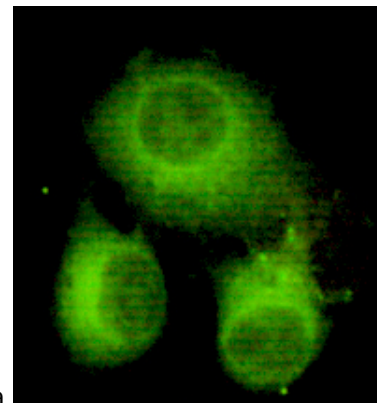


Flow Cytometry analysis of HeLa cells stained with ATP-Citrate Lyase (red, 1/100 dilution), followed by FITC-conjugated goat anti-mouse IgG. Black line histogram represents the isotype



control, normal mouse IgG

Western blot detection of ATP-Citrate Lyase in 3T3, K562, COS7 and HeLa cell lysates using ATP-Citrate Lyase mouse mAb (1:1000 diluted). Predicted band size: 120kDa. Observed



band size: 120kDa.

Immunocytochemistry of HeLa cells using anti-ATP-Citrate Lyase (C-terminus) mouse mAb diluted 1:150.