

# Anti-STAT6 (2B2) Mouse antibody



Catalog Number: 168395

## Product name

Anti-STAT6 (2B2) Mouse antibody

WB: 1/500 - 1/2000

ICC: 1/200 - 1/1000

## Specificity

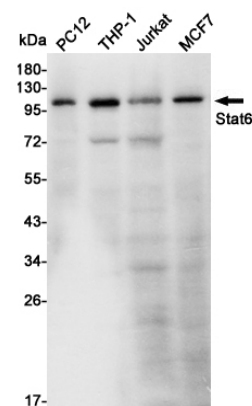
Human, Mouse, Rat, Monkey

ELISA: 1/10000

## Antibody description

STAT6 (2B2) Mouse monoclonal antibody

## Validations



## Preparation

Antigen: Purified recombinant fragment of human STAT6 expressed in E. Coli.

Western blot detection of Stat6 in PC12, THP-1, Jurkat and MCF7 cell lysates using Stat6 mouse mAb (1:1000 diluted). Predicted band size: 94KDa. Observed band size: 110KDa.

## Formulation

Ascitic fluid containing 0.03% sodium azide.

## Storage

Store at 4°C short term. Store at -20°C long term. Avoid freeze / thaw cycle.

## Clonality

Monoclonal

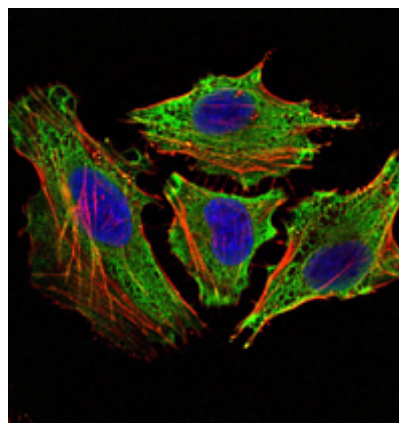
## Ig Type

Mouse IgG1

## Applications

WB, ICC/IF

## Dilutions



Immunofluorescence analysis of HeLa cells using STAT6 mouse mAb (green). Blue