

Anti-Glucose 6 Phosphate Dehydrogenase (2H7) Mouse antibody



Catalog Number: 168348

Product name

Mouse IgG1

Anti-Glucose 6 Phosphate Dehydrogenase (2H7) Mouse antibody

Applications

WB, IHC-P, FC

Specificity

Human

Dilutions

WB: 1/500 - 1/2000

Antibody description

IHC: 1/200 - 1/1000

Glucose 6 Phosphate Dehydrogenase (2H7) Mouse monoclonal antibody

FC: 1/200 - 1/400

Preparation

ELISA: 1/10000

Antigen: Purified recombinant fragment of human G6PD expressed in E. Coli.

Validations

Formulation

Ascitic fluid containing 0.03% sodium azide.

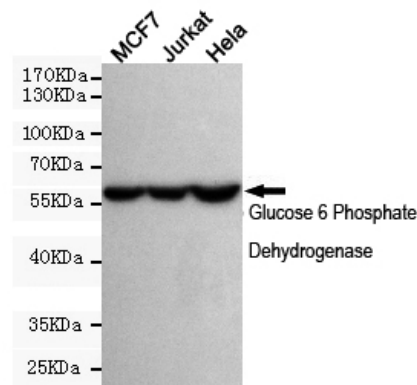
Storage

Store at 4°C short term. Store at -20°C long term. Avoid freeze / thaw cycle.

Clonality

Monoclonal

Ig Type



Western blot detection of Glucose 6 Phosphate Dehydrogenase in MCF7, Jurkat and HeLa cell lysates using Glucose 6 Phosphate Dehydrogenase mouse mAb (dilution 1:500). Predicted band size: 59 kDa. Observed band size: 59 kDa.