

# Anti-Integrin beta 1 (7B5) Mouse antibody



Catalog Number: 168308

## Product name

Anti-Integrin beta 1 (7B5) Mouse antibody

WB: 1/500 - 1/2000

FC: 1/200 - 1/400

## Specificity

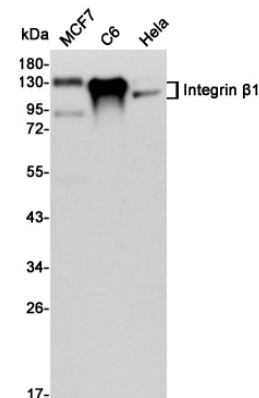
Human

ELISA: 1/10000

## Antibody description

Integrin beta 1 (7B5) Mouse monoclonal antibody

## Validations



## Preparation

Antigen: Purified recombinant fragment of human ITGB1 expressed in E. Coli.

## Formulation

Purified antibody in PBS with 0.05% sodium azide

## Storage

Store at 4°C short term. Store at -20°C long term. Avoid freeze / thaw cycle.

Western blot detection of Integrin  $\beta$ 1 in MCF7, C6 and HeLa cell lysates using Integrin  $\beta$ 1 mouse mAb (1:3000 diluted). Predicted band size: 88 kDa. Observed band size: 115, 135 kDa.

## Clonality

Monoclonal

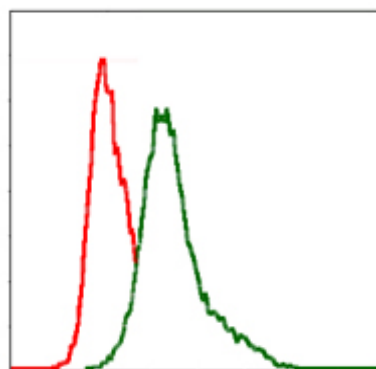
## Ig Type

Mouse IgG1

## Applications

WB, FC

## Dilutions



Flow cytometric analysis of MCF-7 cells using ITGB mouse mAb (green) and negative control (red).