

Anti-KMT1E/SETDB1 (1E7) Mouse antibody



Catalog Number: 168280

Product name

Anti-KMT1E/SETDB1 (1E7) Mouse antibody

WB: 1/500 - 1/2000

ICC: 1/200 - 1/1000

Specificity

Human, Mouse, Monkey

ELISA: 1/10000

Antibody description

KMT1E/SETDB1 (1E7) Mouse monoclonal antibody

Preparation

Antigen: Purified recombinant fragment of human SETDB1 expressed in E. Coli.

Formulation

Ascitic fluid containing 0.03% sodium azide.

Storage

Store at 4°C short term. Store at -20°C long term. Avoid freeze / thaw cycle.

Clonality

Monoclonal

Ig Type

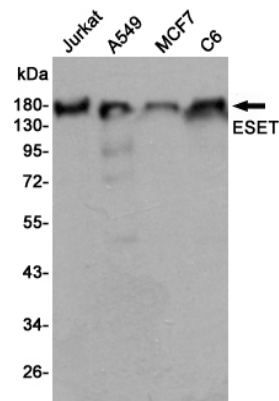
Mouse IgG1

Applications

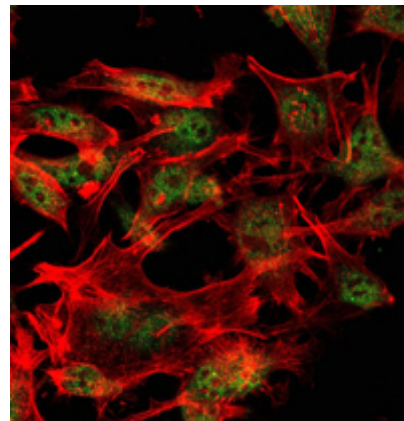
WB, ICC/IF

Dilutions

Validations



Western blot detection of ESET in Jurkat, A549, MCF7 and C6 cell lysates using ESET mouse mAb (1:2000 diluted). Predicted band size: 180KDa. Observed band size: 180KDa.



Immunofluorescence analysis of LOVO cells using SETDB1 mouse mAb (green). Red: Actin filaments have been labeled with Alexa Fluor-555 phalloidin.