

Anti-KLF15 (7B12) Mouse antibody



Catalog Number: 168270

Product name

Mouse IgG1

Anti-KLF15 (7B12) Mouse antibody

Applications

Specificity

WB

Human

Dilutions

Antibody description

WB: 1/500 - 1/2000

KLF15 (7B12) Mouse monoclonal antibody

ELISA: 1/10000

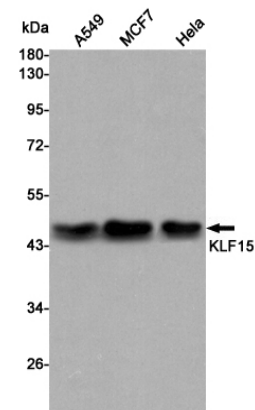
Preparation

Antigen: Purified recombinant fragment of human KLF15 expressed in E. Coli.

Validations

Formulation

Ascitic fluid containing 0.03% sodium azide.



Storage

Store at 4°C short term. Store at -20°C long term. Avoid freeze / thaw cycle.

Western blot detection of KLF15 in A549, MCF7 and HeLa cell lysates using KLF15 mouse mAb (1:3000 diluted). Predicted band size: 44 kDa. Observed band size: 44 kDa.

Clonality

Monoclonal

Ig Type