

# Anti-RPS6 (7B10) Mouse antibody



Catalog Number: 168260

## Product name

Anti-RPS6 (7B10) Mouse antibody

## Specificity

Human, Mouse, Rat, Monkey

## Antibody description

RPS6 (7B10) Mouse monoclonal antibody

## Preparation

Antigen: Synthetic peptide derived from human S6 Ribosomal Protein.

## Formulation

Purified mouse monoclonal antibody in PBS(pH 7.4) containing with 0.03% Proclin300 and 50% glycerol.

## Storage

Store at 4°C short term. Store at -20°C long term. Avoid freeze / thaw cycle.

## Clonality

Monoclonal

## Ig Type

Mouse IgG1

## Applications

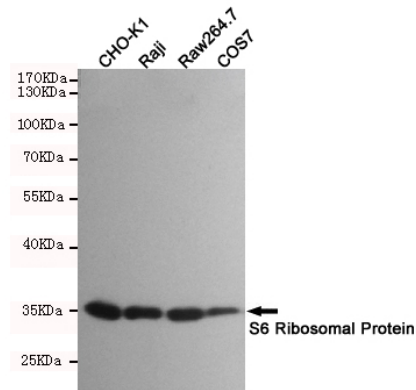
WB, ICC/IF, IP

## Dilutions

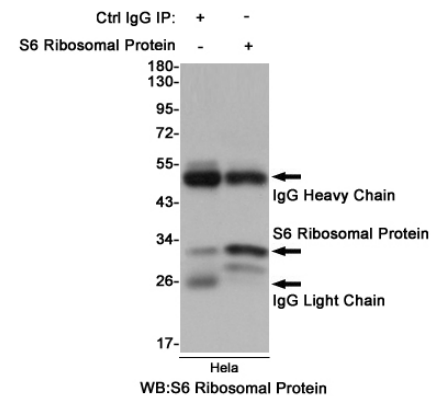
WB: 1/2000

;ICC: 1/200

## Validations

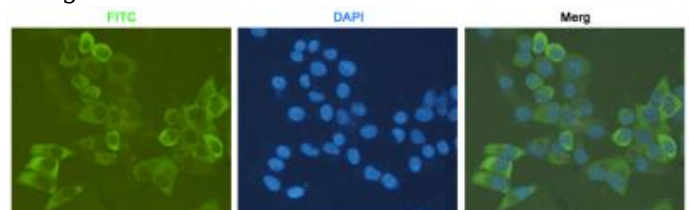


Western blot detection of S6 Ribosomal Protein in CHO-K1, Raji, Raw264.7 and COS7 cell lysates using S6 Ribosomal Protein mouse mAb (1:2000 diluted). Predicted band size: 32KDa. Observed



band size: 32KDa.

Immunoprecipitation analysis of HeLa cell lysates using S6 Ribosomal Protein Mouse mAb.

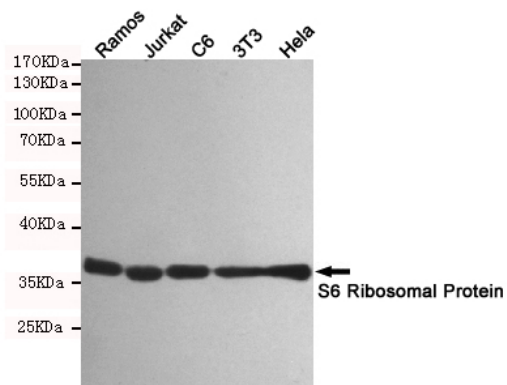


Immunocytochemistry staining of HeLa cells fixed with 4% Paraformaldehyde and using anti-S6 Ribosomal Protein mouse mAb (dilution 1:200).

# Anti-RPS6 (7B10) Mouse antibody



Catalog Number: 168260



Western blot detection of S6 Ribosomal Protein in Ramos, Jurkat, C6, 3T3 and HeLa cell lysates using S6 Ribosomal Protein mouse mAb (1:2000 diluted). Predicted band size: 60 kDa. Observed band size: 60 kDa.