

# Anti-CREB (1E9) Mouse antibody



Catalog Number: 168228

## General Information

### Product name:

Anti-CREB (1E9) Mouse antibody

### Immunogen:

### Applications:

WB

### Specificity:

Human, Rat

### Antibody description:

CREB (1E9) Mouse monoclonal antibody

## Properties

### Preparation:

Antigen: Purified recombinant human CREB protein fragments expressed in E.coli.

### Formulation:

Ascites containing with 0.03% Proclin300 and 50% glycerol.

### Storage:

Store at 4°C short term. Store at -20°C long term. Avoid freeze / thaw cycle.

### Clonality:

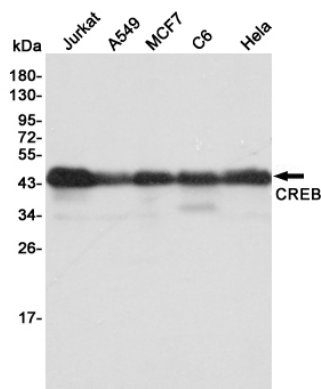
Monoclonal

### Ig Type: IgG1

## Applications

WB: 1/1000

## Validations



Western blot detection of CREB in Jurkat, A549, MCF7, C6 and HeLa cell lysates using CREB mouse mAb (dilution 1:1000). Predicted band size: 46 kDa. Observed band size: 43 kDa.