

# Anti-S100 alpha 6/PRA (3E11) Mouse antibody



Catalog Number: 168221

## Product name

Monoclonal

Anti-S100 alpha 6/PRA (3E11) Mouse antibody

## Ig Type

## Specificity

Mouse IgG1

Human

## Applications

## Antibody description

WB

S100 alpha 6/PRA (3E11) Mouse monoclonal antibody

## Dilutions

WB: 1/1000

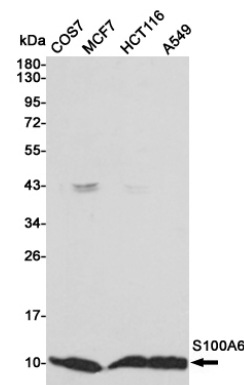
## Preparation

Antigen: Purified recombinant human S100A6 protein expressed in E.coli.

## Validations

## Formulation

Purified mouse monoclonal antibody in PBS(pH 7.4) containing with 0.03% Proclin300 and 50% glycerol.



## Storage

Store at 4°C short term. Store at -20°C long term. Avoid freeze / thaw cycle.

Western blot detection of S100A6 in COS7, MCF7, HCT116 and A549 cell lysates using S100A6 mouse mAb (1:1000 diluted). Predicted band size: 10KDa. Observed band size: 10KDa.

## Clonality