

# Anti-NSE (1H8) Mouse antibody



Catalog Number: 168219

## Product name

Anti-NSE (1H8) Mouse antibody

## Specificity

Human, Mouse, Rat

## Antibody description

NSE (1H8) Mouse monoclonal antibody

## Preparation

Antigen: Synthetic peptide derived from human NSE.

## Formulation

Purified mouse monoclonal antibody in PBS(pH 7.4) containing with 0.03% Proclin300.

## Storage

Store at 4°C short term.Avoid freeze / thaw cycle.

## Clonality

Monoclonal

## Ig Type

IgG1

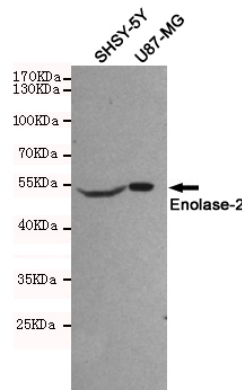
## Applications

ELISA, WB

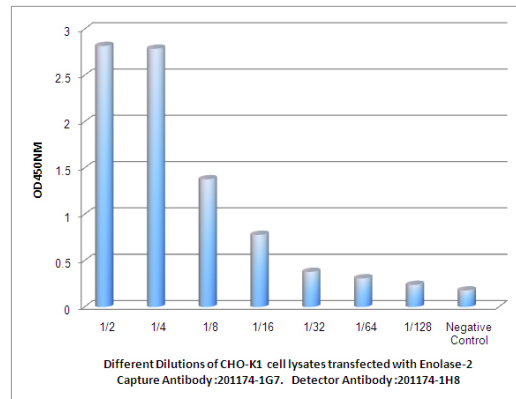
## Dilutions

WB: 1/500

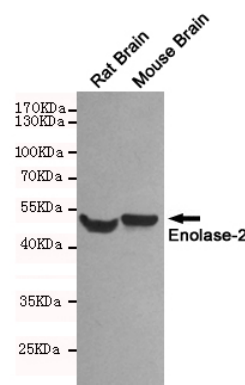
## Validations



Western blot detection of Enolase-2 in SHSY-5Y and U87-MG cell lysates using Enolase-2 mouse mAb (1:500 diluted). Predicted band size: 47 kDa. Observed band size: 47 kDa.



Observed Enolase-2 levels in CHO-K1 cell lysates transfected with Enolase-2 at different dilution.



Western blot detection of Enolase-2 in Rat Brain and Mouse Brain lysates using Enolase-2 mouse mAb (1:500 diluted). Predicted band size: 47 kDa. Observed band size: 47 kDa.