

Anti-HP1 alpha (1E8) Mouse antibody



Catalog Number: 168144

Product name

Anti-HP1 alpha (1E8) Mouse antibody

Specificity

Human, Rat, Mouse

Antibody description

HP1 alpha (1E8) Mouse monoclonal antibody

Preparation

Antigen: Purified recombinant protein expressed in E.coli.

Formulation

PBS(pH 7.4) containing with 0.02% sodium azide and 50% glycerol.

Storage

Store at 4°C short term. Store at -20°C long term. Avoid freeze / thaw cycle.

Clonality

Monoclonal

Ig Type

Mouse IgG1

Applications

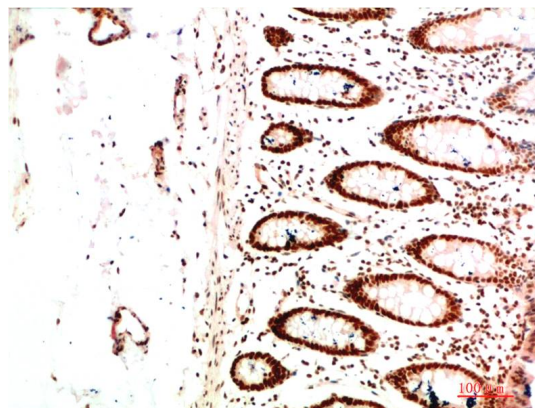
WB, IHC-P

Dilutions

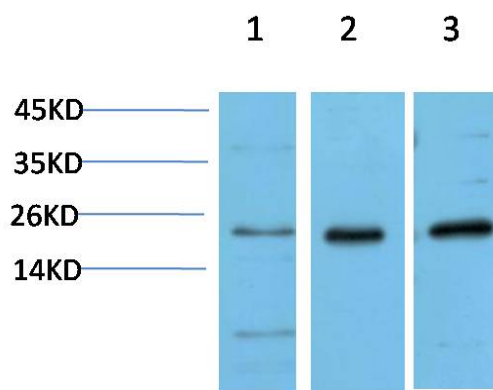
WB: 1/500-1;000

IHC: 1/100-200

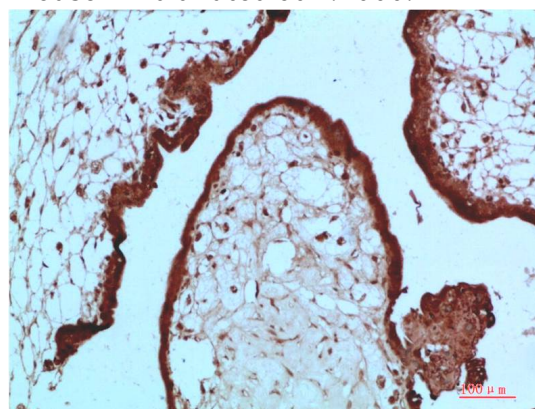
Validations



Immunohistochemical analysis of paraffin-embedded Human Colon Carcinoma Tissue using HP-1 α Mouse mAb diluted at 1:200.



Western blot analysis of 1) HeLa Cell Lysate, 2) 3T3 Cell Lysate, 3) PC12 Cell Lysate using HP-1 α Mouse mAb diluted at 1:1000.

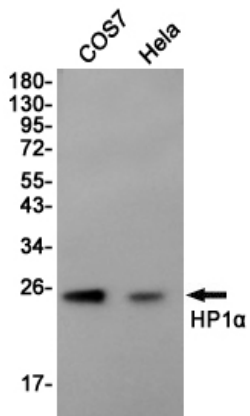


Immunohistochemical analysis of paraffin-embedded Human Placenta Tissue using HP-1 alpha; Mouse mAb diluted at 1:200

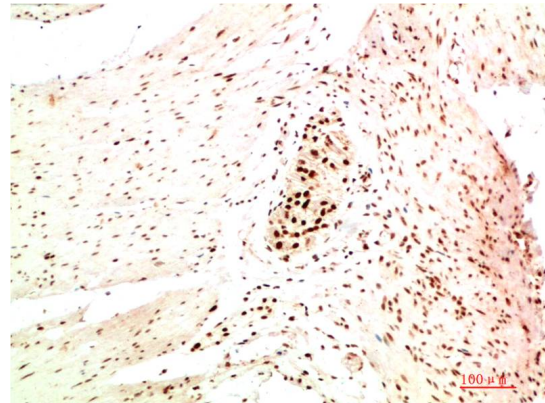
Anti-HP1 alpha (1E8) Mouse antibody



Catalog Number: 168144



band size:22KDa.



Western blot detection of HP1 α in COS7,HeLa cell lysates using HP1 α (1E8) Mouse mAb(1:1000 diluted).Predicted band size:22KDa.Observed

Immunohistochemical analysis of paraffin-embedded Human Colon Carcinoma Tissue using HP-1 α Mouse mAb diluted at 1:200.