

Anti-NSE (4C7) Mouse antibody



Catalog Number: 168100

Product name

WB: 1/2000

Anti-NSE (4C7) Mouse antibody

IHC: 1/200

Specificity

IF: 1/200

Human, Mouse, Rat

Antibody description

NSE (4C7) Mouse monoclonal antibody

Preparation

Antigen: Synthetic Peptide of NSE

Formulation

PBS, pH 7.4, containing 0.02% sodium azide as Preservative and 50% Glycerol.

Storage

Store at 4°C short term. Store at -20°C long term. Avoid freeze / thaw cycle.

Clonality

Monoclonal

Ig Type

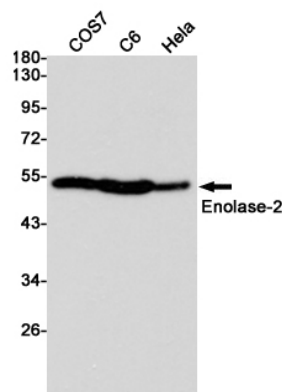
Mouse IgG1

Applications

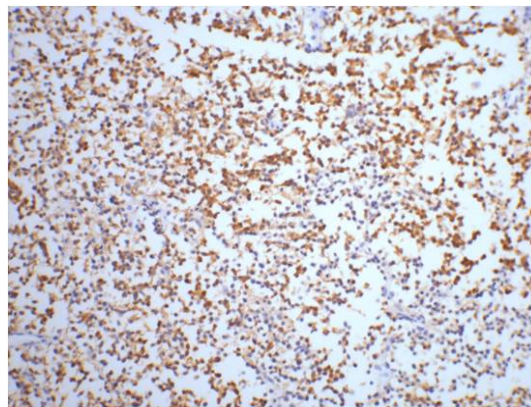
WB, ICC/IF, IHC-P

Dilutions

Validations



Western blot analysis of Enolase-2 expression in COS7, C6 and HeLa cell lysates using Enolase-2 mouse mAb at 1/10000 dilution. Predicted band size: 47 kDa. Observed band size: 47 kDa.



IHC staining of Human small cell carcinoma of lung tissue with NSE mouse mAb (13E2) diluted at 1:200.