

# Anti-phospho-KIF22 (Ser427) Rabbit antibody



Catalog Number: 168059

## Product name

Anti-phospho-KIF22 (Ser427) Rabbit antibody

## Ig Type

Rabbit IgG

## Specificity

Human

## Applications

WB

## Antibody description

phospho-KIF22 (Ser427) Rabbit monoclonal antibody

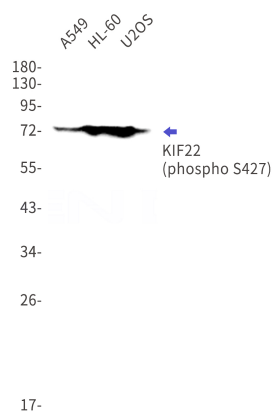
## Dilutions

WB: 1/1000

## Preparation

Antigen: A synthetic phosphopeptide corresponding to residues surrounding Ser427 of human KIF22

## Validations



## Formulation

50nM Tris-Glycine(pH 7.4), 0.15M NaCl, 40%Glycerol, 0.01% sodium azide and 0.05% BSA

## Storage

Store at 4°C short term. Store at -20°C long term. Avoid freeze / thaw cycle.

## Clonality

Monoclonal

Western blot detection of phospho-KIF22 (Ser427) in A549,HL-60,U2OS cell lysates using phospho-KIF22(Ser427) Rabbit mAb(1:1000 diluted).Predicted band size:73kDa.Observed band size:73kDa.